

Holmes Creek Preserve



Overview

Tagging the word “Preserve” to the name of a property sets high expectations for what lies within. Yet, with a full complement of impressive natural features, Holmes Creek Preserve holds up to such scrutiny. Within its 391 acres, there’s access to spring-fed Holmes Creek which ultimately reaches the Choctawhatchee River before flowing into the Gulf of Mexico. There are also two streams that wind through the property, mature towering loblolly pines, and hardwood swamps that all create a diverse and interesting property to enjoy. The landscape is enhanced further with a topography that varies from 140’ – 200’.

Surrounded by agriculture lands and possessing abundant water sources, Holmes Creek Preserve is an excellent choice for hunters while lending itself to many other recreational pursuits including ATV and horseback riding. As an added benefit, there is valuable timber on the property.

Located in the northeast corner of Holmes County, Florida, Holmes Creek Preserve lies one-half mile from the Alabama state line and is a short four-mile drive to Graceville where modern conveniences can be had. For more amenities, Dothan is just 30 minutes away.

At a Glance:

Acreage:

391± acres

Asking Price:

\$2,900 per acre

Location:

Holmes County, Florida

Special Attributes:

- Access to Holmes Creek
- Two Streams
- Mature Pines
- Rolling topography
- Recreational Opportunities

Arnie Rogers, Licensed Real Estate Broker

Verdura Realty, LLC • 316 Williams Street • Tallahassee, FL 32303

Cell: 850.491.3288 • Email: arogers@verduraproperties.com

www.VerduraProperties.com



Holmes Creek Preserve

Photos



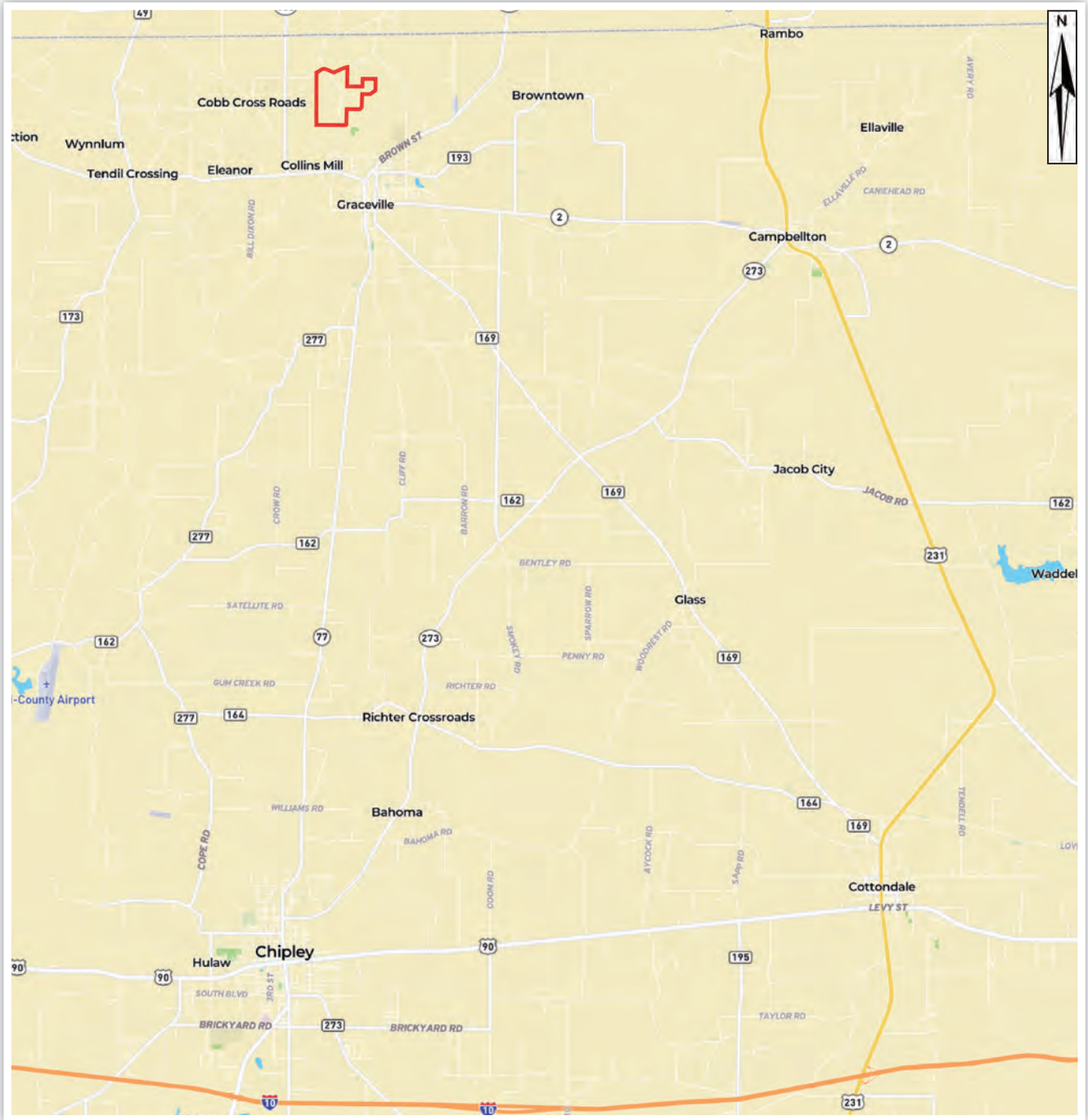
Arnie Rogers, Licensed Real Estate Broker
Verdura Realty, LLC • 316 Williams Street • Tallahassee, FL 32303
Cell: 850.491.3288 • Email: arogers@verduraproperties.com
www.VerduraProperties.com



Please note that while all information is believed to be reliable, none is guaranteed.

Holmes Creek Preserve

Location



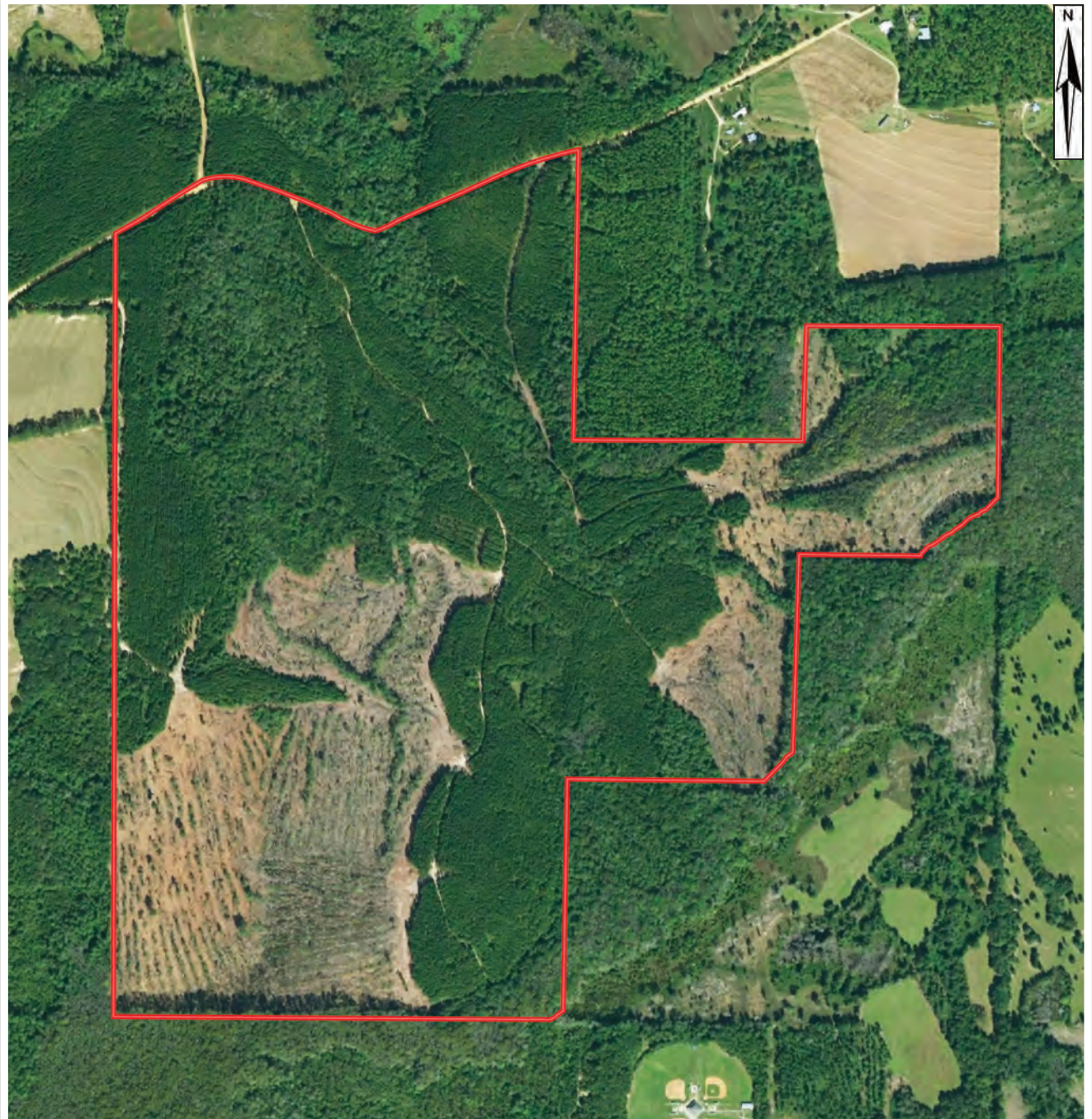
Arnie Rogers, Licensed Real Estate Broker
Verdura Realty, LLC • 316 Williams Street • Tallahassee, FL 32303
Cell: 850.491.3288 • Email: arogers@verduraproperties.com
www.VerduraProperties.com



Please note that while all information is believed to be reliable, none is guaranteed.

Holmes Creek Preserve

Aerial



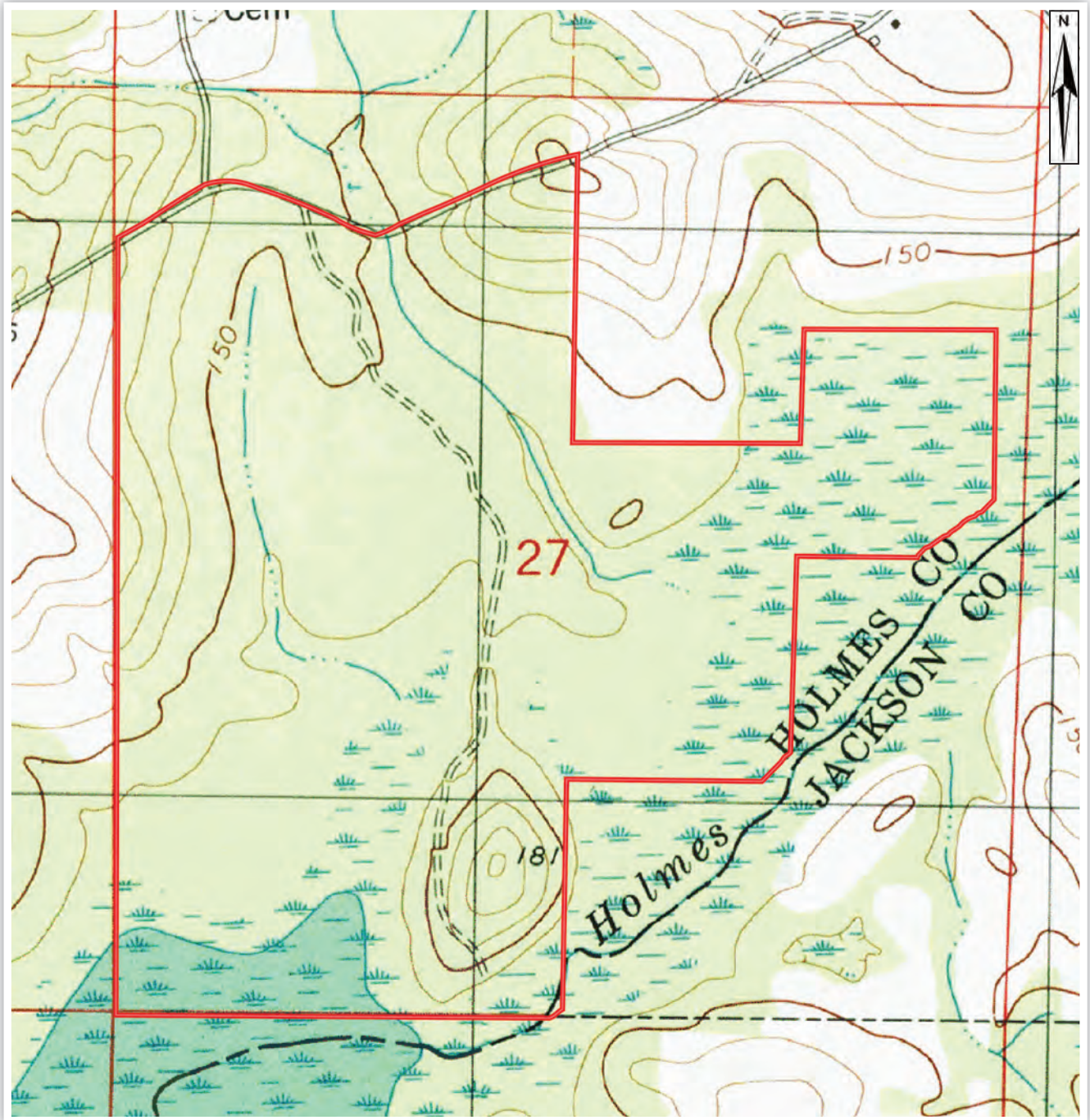
Arnie Rogers, *Licensed Real Estate Broker*
Verdura Realty, LLC • 316 Williams Street • Tallahassee, FL 32303
Cell: 850.491.3288 • Email: arogers@verduraproperties.com
www.VerduraProperties.com



Please note that while all information is believed to be reliable, none is guaranteed.

Holmes Creek Preserve

Topo



Arnie Rogers, Licensed Real Estate Broker
Verdura Realty, LLC • 316 Williams Street • Tallahassee, FL 32303
Cell: 850.491.3288 • Email: arogers@verduraproperties.com
www.VerduraProperties.com



Please note that while all information is believed to be reliable, none is guaranteed.